

Short Manual DX5.0 Sensor with Smart Run v.3.10.0

Starting and stopping the DX5.0 sensor with the Smart Run app

1. Link up your DX5.0 with the Smart Run app
2. Make sure to select your gate type (upper right corner):
SmarTracks Location (location name is given) or Mobile Gates*
3. SmarTracks Location: Select your starting position (area, lane, direction)
SmarTracks Mobile Gates: Choose your Gate pattern
4. Press the round orange Run button
5. The sensor is now active. You can start your run whenever you are ready
6. When starting your run, stand still for 1 second and start your run 1m before a Timing Gate
7. The timing begins after passing the first Timing Gate.
Timing results are livestreamed to your phone
8. After your run, stand still for 1 second
9. When the run has ended and the DX5.0 is close to the smartphone again, stop the sensor by pressing 'stop'.
The app automatically fetches all the results from the sensor

***When using your Mobile Gates for the first time, you first need to register them to your Smart Run account (see next page)**



Note for SmarTracks Diagnostics users:

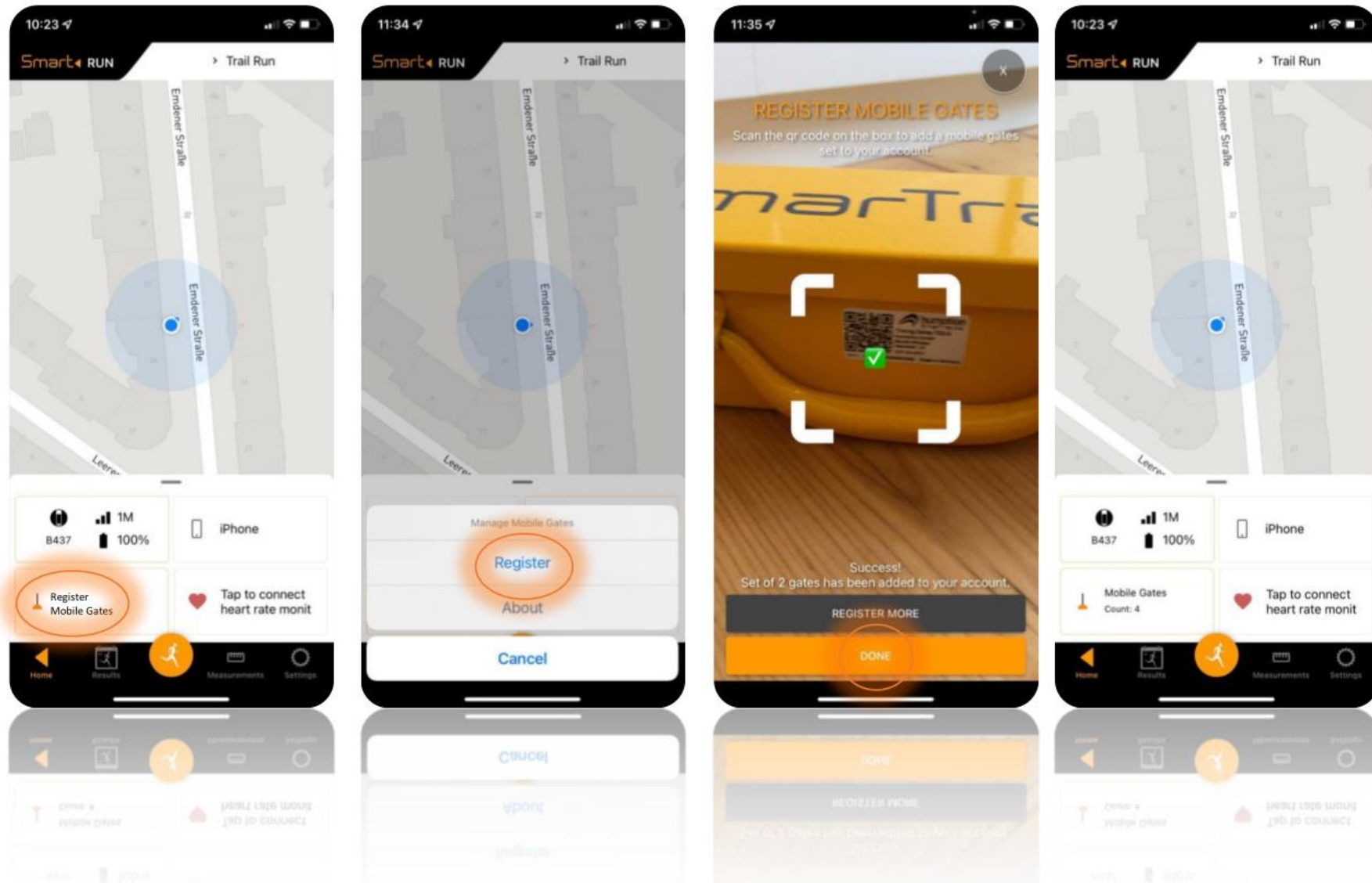
Do not try to start or stop the sensor with the Smart Run app after you have started the sensor with SmarTracks Diagnostics software!

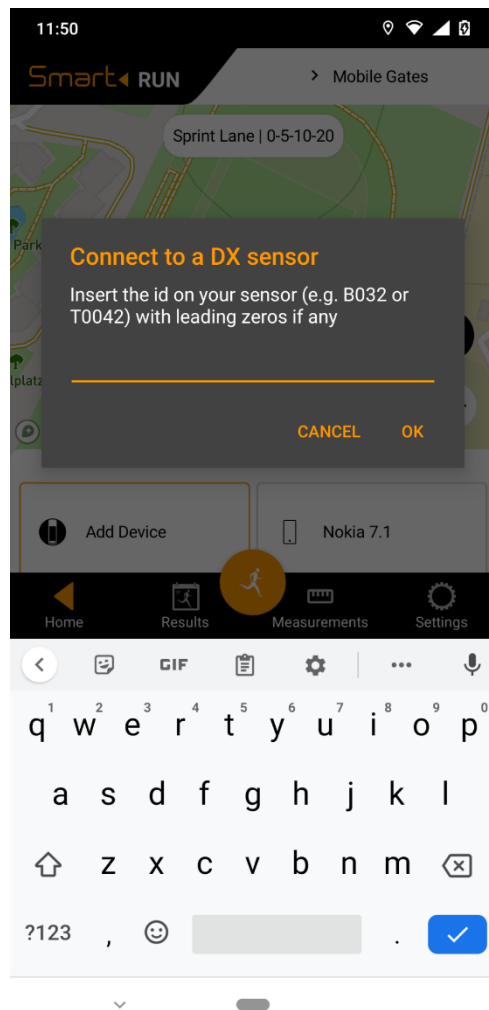
The Smart Run app and the Diagnostics software are to be used separately! *

* For more information on the DX5.0 sensor and the Smart Run app, see www.smartracks.run.

How to register your Mobile Gates set

Use the app to scan the QR code on the yellow Timing Gates case





How do I link my DX5.0 sensor with the Smart Run app?

1. Make sure your smartphone's Bluetooth functionality is activated and your DX5.0 sensor is nearby
2. Click 'Add Device' in the drawer on the home screen
3. Type the housing number of your DX5.0 sensor in the input box
4. Click OK
5. Your smartphone is now linked to your DX5.0 sensor

To unlink the DX5.0 sensor from your smartphone, click the sensor box in the drawer on the home screen and choose *unlink*.

Connection strength between smartphone and DX5.0 sensor

The connection strength and data transfer speed between the smartphone and sensor can vary according to your mobile device.

Make sure your DX5.0 is close enough when:

- Starting the sensor with the app
- Stopping & fetching results after your run
- When updating the firmware

The connection is cancelled when closing the app.

Viewing results on SmartTracks Online

Your detailed results can be viewed on <https://online.smartracks.run/>.

Log in with the same credentials as your Smart Run account.

DX5.0 Sensor – Charging and Firmware Updates

Charging the DX5.0 sensor

The DX5.0 sensor can be charged with a regular USB adapter (5V).

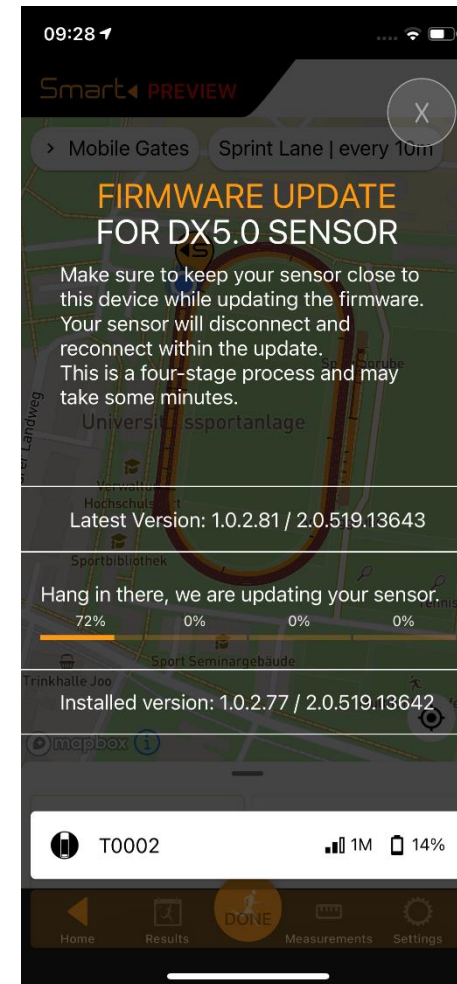
Please charge the DX5.0 sensor prior to your training session. After the DX5.0 sensor is fully charged and put aside, it will run out of battery within 10 hours as it has no sleep mode yet.

Measurement time: up to 10 hours

Charging time: 80%: ca. 2 hours, 100%: ca. 3 hours

Firmware update for the DX5.0 sensor

1. Make sure your DX5.0 sensor is connected to your smartphone
2. Click on the sensor box in the drawer on the home screen
3. Chose *Firmware Update* from the list
4. If a new firmware version is available for your sensor, press 'Update now'
5. The update process starts automatically. Once the update has finished, press 'Done'



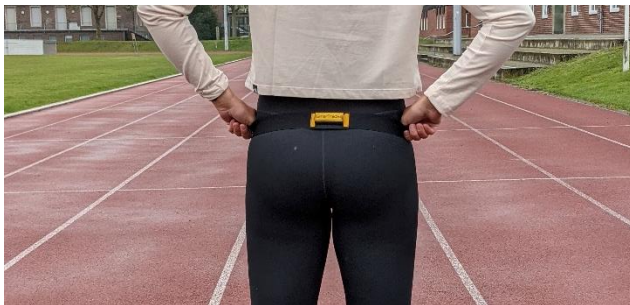
How do I wear the DX5.0 sensor?

The DX5.0 sensor should be worn on the lower back, crossing the L4/L5 vertebrae. For this, you can use either the TB40 Belt or the MB60 Belt:

TB40 Belt



Make sure the black cap points to the left and the Humotion logo faces outwards.

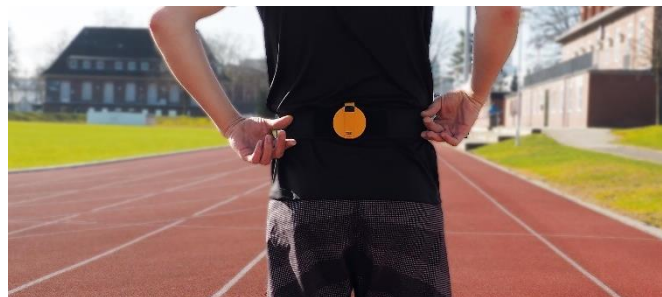


The TB40 Belt is positioned on the lower back with the DX5.0 sensor aligned with the spine. The black sensor cap points to the left and the Humotion logo on the sensor faces outwards.

MB60 Belt



Make sure the black cap points upwards, and the sensor is aligned with the spine.



The MB60 Belt is positioned on the lower back with the DX5.0 sensor aligned with the spine. The black sensor cap points upwards.

Support and Troubleshooting

Checklist for correct results

- Wear the DX5.0 sensor on your back
- Start 1 meter in front of the first Timing Gate
- Stand still for 1 second before and after the run

In case of technical problems, try to:

- Reset the DX5.0 sensor
- Check if there is a firmware update available for your DX5.0
- Log out of the app and log in again

If none of the steps above have resolved your issues, please request support from our Technical Support Team.

Instructions and FAQs

For more instructions, visit <https://smartracks.run/support>

Technical Support Contact Details

Email: support@humotion.net
Telephone: +49 251 590 805 40

Support Request

If case of technical problems, please send the app's log file to our Technical Support team via the app. This will help our team to analyse the problem.

1. Go to 'Settings'
2. Click 'Report Problem'
3. Describe your problem in the email. The app's log file is automatically attached to the email.
4. The Technical Support team will contact you as soon as possible.

